

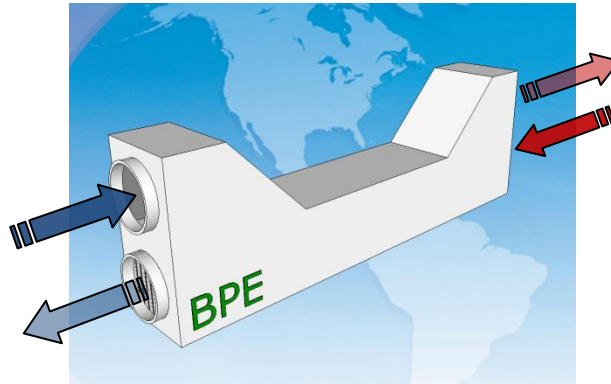


Building Performance Equipment, Inc.®

Sustainable, Reliable and Energy Efficient Ventilation Systems

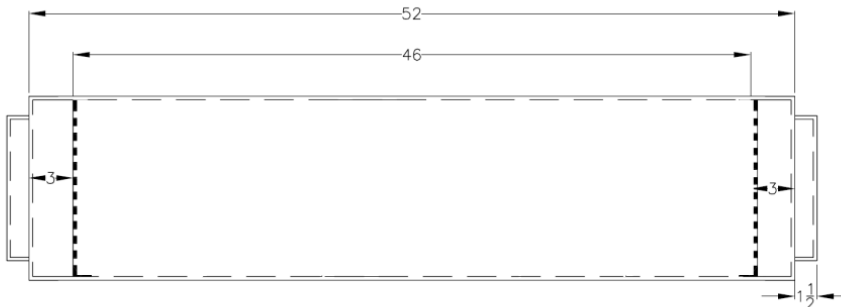


BPE-XE-MIR 500

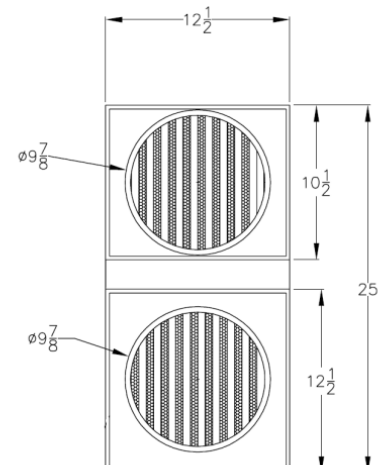
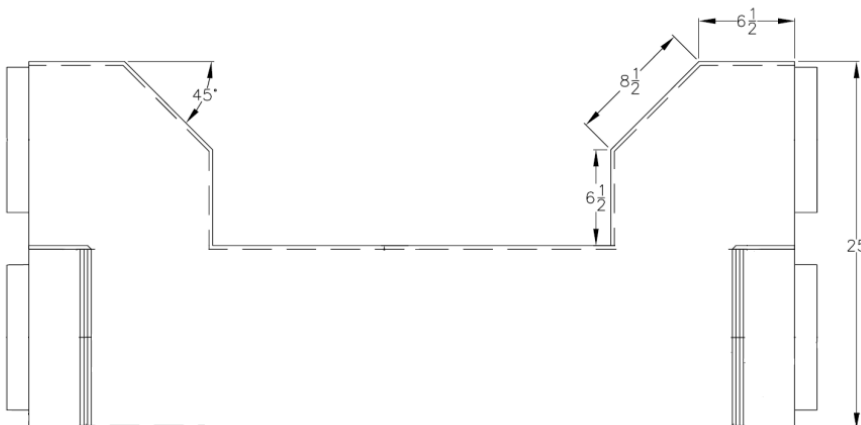


SPECIFICATIONS

Model Number: BPE-XE-MIR 500, Energy Recovery Module (ERM)				
Ventilation Type: Polymer Fixed Plate, Heat and Humidity Transfer				
Typical Air Flow Range: 200 to 550 cfm				
V	Hz	Phase	Input Watts	FLA
115	60	Single	274 @ 429 cfm	1.35 each fan
Energy Efficiency Ratio (EER) - Summer = BTUH/W = 31.53 (ARI 1060 at 95°F)				
Energy Efficiency Ratio (EER) - Winter = BTUH/W = 75.67 (ARI 1060 at 10°F)				
Typical Fans: Fantech FR-225, 274 Watts for two fans (NOTE: order fans separately)				
Shipping Dimensions: 60" x 28" x 14 1/2" (boxed)				
Weight: 85 lbs (Packaged), 80 lbs (ERM alone)				



Note: Dimensions in inches and subject to change



www.LowkWh.com

Support: (201) 722.1414 | Fax: (201) 722-0999

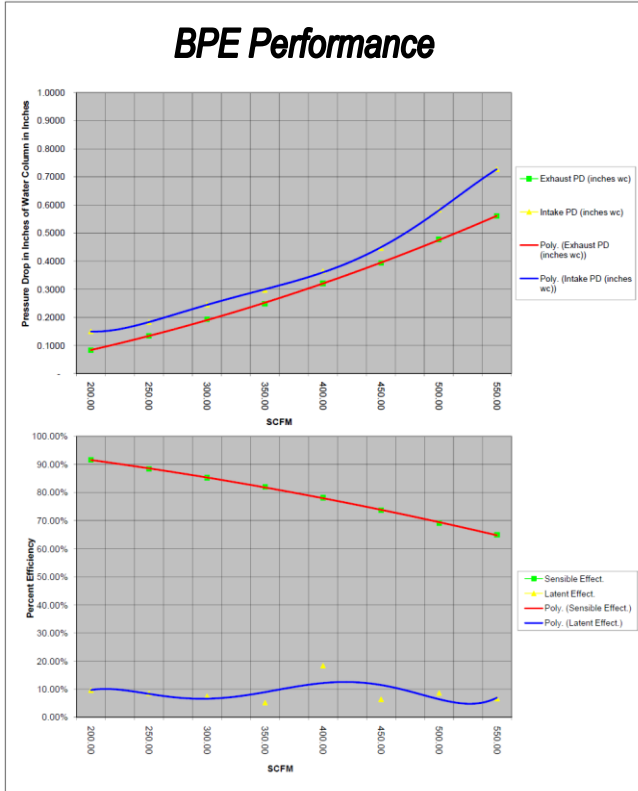


Building Performance Equipment, Inc.®

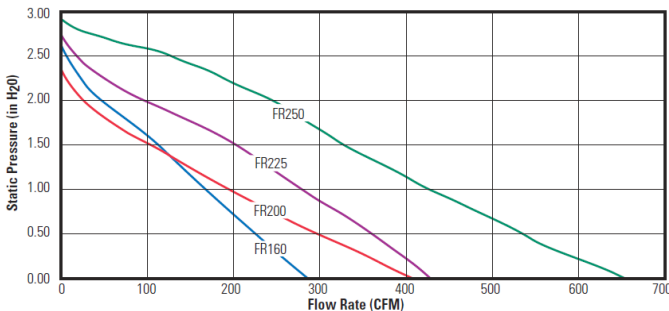
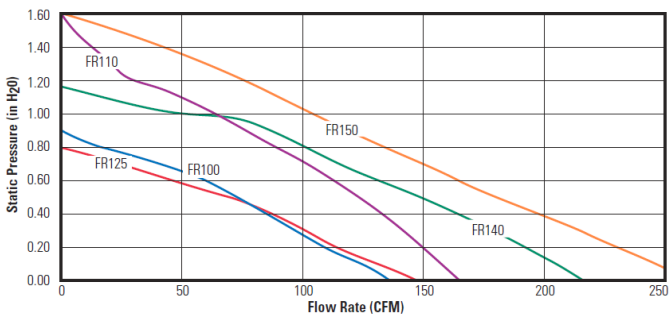
Sustainable, Reliable and Energy Efficient Ventilation Systems



Eco Air Anywhere®



AIR PERFORMANCE GRAPHS



ARI 1060 Testing

Project Name:

Location:

Application:

Design Conditions

SCFM - Outdoor Air °F DB

SCFM - Exhaust Air °F WB

% Sensible Effectiveness

Fan Sizing

in W.G. - HX Outdoor Air (ΔP)

in W.G. - HX Exhaust Air (ΔP)

in W.G. - OA External Static Pressure (ESP)

in W.G. - EX External Static Pressure (ESP)

Booster Fan - OA YES / NO

Booster Fan - EX YES / NO

Fan Selections

Outdoor Air - Total Static Pressure (TSP) in W.G.

Fan Model FR / FKD

Fan Size

Voltage/Phase	Amps/Hz	Max. Watts
<input type="text"/>	<input type="text"/>	<input type="text"/>

Manual Speed Controller YES / NO

Describe Operating Controls

Exhaust Air - Total Static Pressure (TSP) in W.G.

Fan Model FR / FKD

Fan Size

Voltage/Phase	Amps/Hz	Max. Watts
<input type="text"/>	<input type="text"/>	<input type="text"/>

Manual Speed Controller YES / NO

Describe Operating Controls