

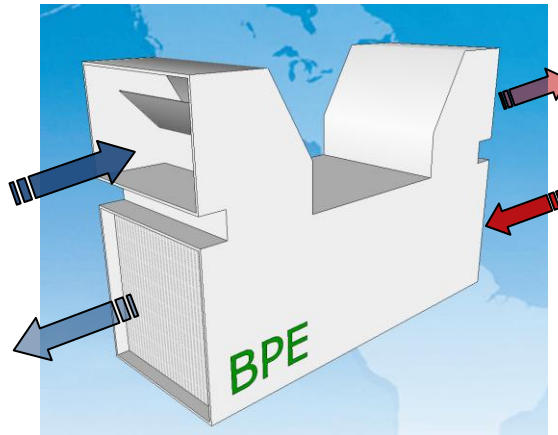


Building Performance Equipment, Inc.®

Sustainable, Reliable and Energy Efficient Ventilation Systems

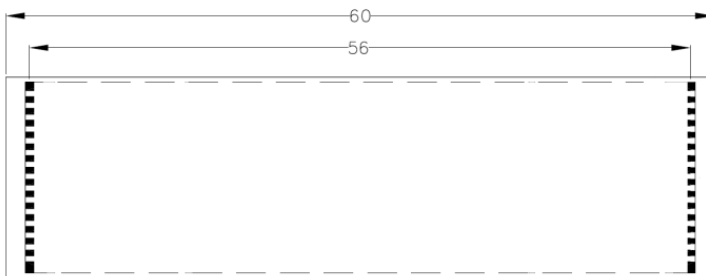


BPE-XE-MIR 1000

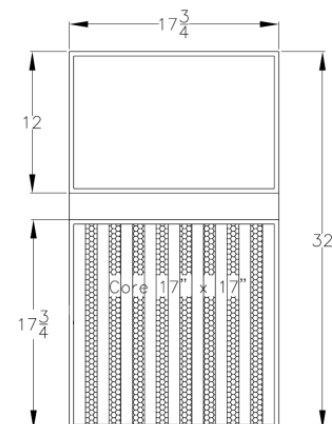
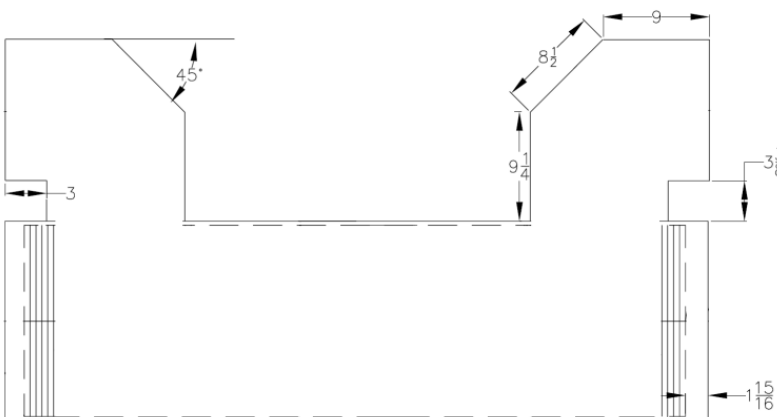


SPECIFICATIONS

Model Number: BPE-XE-MIR 1000, Energy Recovery Module (ERM)				
Ventilation Type: Polymer Fixed Plate, Heat and Humidity Transfer				
Typical Air Flow Range: 400 to 1,100 cfm				
V	Hz	Phase	Input Watts	FLA
120	60	Single	362 @ 627 cfm	1.87 each fan
Energy Efficiency Ratio (EER) - Summer = Btus/Watt = 38.9 (ARI 1060 at 95°F)				
Energy Efficiency Ratio (EER) - Winter = Btus/Watt = 81.3 (ARI 1060 at 10°F)				
Typical Fans: Fantech FKD-10, 329 Watts each fan (NOTE: order fans separately)				
Shipping Dimensions: 70" x 48" x 28" (Elongated pallet)				
Weight: 280 lbs (Boxed on pallet), 140 lbs (ERM alone)				



Note: Dimensions in inches and subject to change



www.LowkWh.com

Support: (201) 722.1414 | Fax: (201) 722-0999

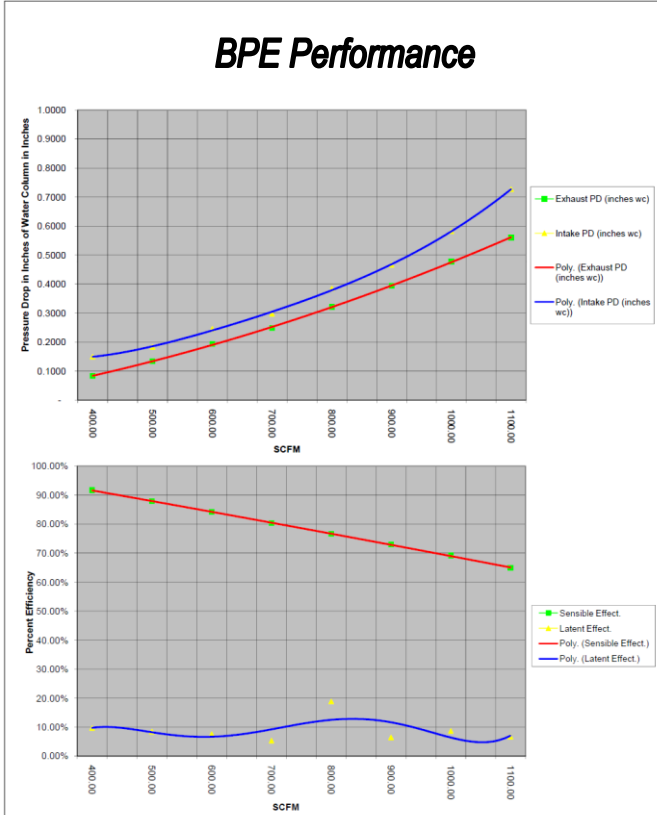


Building Performance Equipment, Inc.®

Sustainable, Reliable and Energy Efficient Ventilation Systems



Eco Air Anywhere®



ARI 1060 Testing

Project Name:

Location:

Application:

Design Conditions

SCFM - Outdoor Air °F DB

SCFM - Exhaust Air °F WB

% Sensible Effectiveness

Fan Sizing

in W.G. - HX Outdoor Air (ΔP)

in W.G. - HX Exhaust Air (ΔP)

in W.G. - OA External Static Pressure (ESP)

in W.G. - EX External Static Pressure (ESP)

Booster Fan - OA YES / NO

Booster Fan - EX YES / NO

Fan Selections

Outdoor Air - Total Static Pressure (TSP) in W.G.

Fan Model FR / FKD

Fan Size

Voltage/Phase	Amps/Hz	Max. Watts

Manual Speed Controller YES / NO

Describe Operating Controls

Exhaust Air - Total Static Pressure (TSP) in W.G.

Fan Model FR / FKD

Fan Size

Voltage/Phase	Amps/Hz	Max. Watts

Manual Speed Controller YES / NO

Describe Operating Controls

AIR PERFORMANCE GRAPHS

